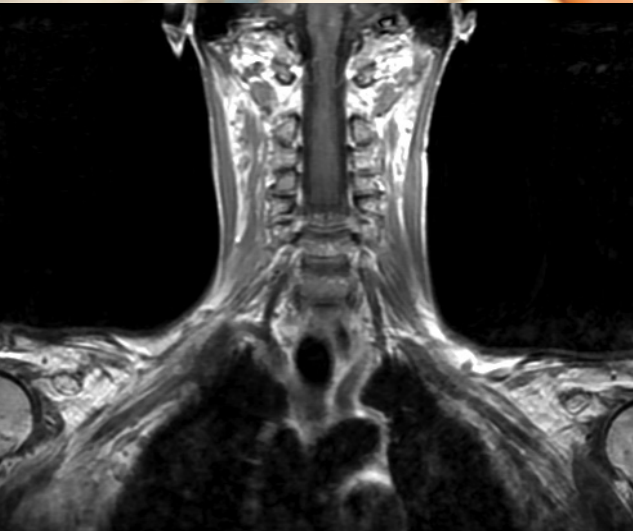


1st Annual Cancer Rehabilitation Symposium

Friday, May 31, 2013 and
Saturday, June 1, 2013

SPONSORED BY

Rehabilitation Medicine Service, Department of Neurology
Memorial Sloan-Kettering Cancer Center
New York, NY



Memorial Sloan-Kettering
Cancer Center

REGISTRATION

\$495.00 – Early Registration (Deadline: 03/31/13)

\$550.00 – After 03/31/13

**Refunds will be given to participants cancelling prior to May 1st. Refunds for cancellations will be subject to a \$50.00 administrative fee. Cancellations after May 1st will not be refunded. Memorial Sloan-Kettering Cancer Center reserves the right to cancel this conference and participants will receive a 100% refund in the event that this occurs.*

SCHEDULE

	Physical Therapy (PT)	Occupational Therapy (OT)	Combined PT/OT	Combined PT/OT	Physician	Workshop
DAY 1: Friday, May 31, 2013						
7:30 - 8:00 AM	REGISTRATION					
8:00 - 8:15 AM	OPENING REMARKS					
8:15 - 9:45 AM	Plenary – Cancer Survivorship: Radiation Fibrosis – The Spectrum of Late Effects of Radiation Fibrosis (<i>Kevin Oeffinger, MD</i>), Principles and Practice of Radiation Therapy (<i>Josh Yamada, MD</i>), and The Radiation Fibrosis Syndrome (<i>Michael Stubblefield, MD</i>)					
9:45 - 10:00 AM	BREAK					
10:00 - 11:00 AM	Evaluation and Treatment Strategies for Radiation Fibrosis in Patients with Head and Neck Cancer: <i>Vivian Hoffman, PT, MSPT, BS and Fallon Levine, PT, DPT, CLT</i>	Assessment and Treatment of High Level vs. Low Level Cognitive Deficits: <i>Claudine Campbell, MOT, OTR/L, CLT</i>	Oncology Basics – Introduction to Oncology: <i>Laryssa Buoneto, PT, DPT, CLT</i>		Neuromusculoskeletal Complications of the Radiation Fibrosis Syndrome: <i>Michael Stubblefield, MD</i>	
11:00 AM - 12:00 PM	Evaluation and Treatment Strategies for Survivors of Hodgkin Lymphoma: <i>Sebi Varghese, PT, DPT</i>	Adaptive Strategies and Interventions for Radiation Fibrosis Syndrome: <i>Gabrielle Miskovitz, OTR/L, CHT</i>	Oncology Basics – Red Flags and Special Considerations: <i>Marissa Wzorek, PT, DPT, CLT</i>		Comprehensive Evaluation of Peripheral Nervous System Dysfunction in the Cancer Setting: <i>Christian Custodio, MD</i>	
12:00 - 1:00 PM	LUNCH					
1:00 - 2:30 PM	Plenary – Breast Reconstruction Surgery – Principles of Mastectomy and Lymph Node Dissection (<i>Alexandra Heerd, MD, MPH, FACS</i>), Principles of Breast Reconstruction (<i>Babak Mehrara, MD</i>), and Post-Mastectomy Reconstruction Syndrome (<i>Katarzyna Ibanez, MD/Janita Robinson, PT, BS</i>)					
2:30 - 2:45 PM	BREAK					
2:45 - 3:45 PM	Therapy Considerations for Geriatric Patients: <i>Jennifer Aquino, PT, DPT, GCS and Noel Espiritu, PT, DPT</i>		Oncology Basics – Rehab Considerations for Orthopedic Surgery Patients: <i>Kristin Czekalski, MS, OTR/L and Amanda Molnar, PT, MSPT</i>	Oncology Basics – Acute Post Surgical Education and Interventions for Patients with Breast Cancer: <i>Maryann Herklotz, PT, MPT</i>	Comprehensive Evaluation and Treatment of Post-Mastectomy Reconstruction Syndrome: <i>Katarzyna Ibanez, MD and Janita Robinson, PT, BS</i>	Ultrasound Guided Injections in the Cancer Setting: <i>Jonas Sokolof, DO</i>
4:00 - 5:00 PM		Strategies for Addressing Psychosocial Needs in the Rehabilitation Setting: <i>Laura Stimler, OTR/L, BCP, C/NDT</i>	Oncology Basics – Rehab Considerations for Neurology and Neurosurgery Patients: <i>Christine Connelly, MS, OTR/L and Lauren Geib, PT, DPT</i>	Oncology Basics – Outpatient Treatment Interventions and Considerations for Patients with Breast Cancer: <i>Laura Sheridan, PT, DPT, CLT</i>	Principles of Breast Reconstructive Surgery in the Cancer Setting: <i>Andrea Pusic, MD, MHS, FRCSC and Babak Mehrara, MD</i>	Botulinum Toxin Injections in the Cancer Setting: <i>Michael Stubblefield, MD</i>

You can register for the 1st Annual Cancer Rehabilitation Symposium and view detailed course descriptions on our website

www.mskcc.org/rehabilitation-symposium

DAY 2: Saturday, June 1, 2013						
7:30 - 8:00 AM	REGISTRATION					
8:00 - 8:15 AM	OPENING REMARKS					
8:15 - 9:45 AM	Plenary – The Role of Exercise in Cancer Rehabilitation – The Role of Exercise in Cancer Rehabilitation (<i>Jonas Sokolof, DO</i>), The Role of Exercise in Managing Cancer-Related Fatigue (<i>Annelise Savodnik, PT, MPT, CLT</i>), and The Role of Exercise as a Prevention and Treatment Strategy for Cancer (<i>Lee Jones, PhD</i>)					
9:45 - 10:00 AM	BREAK					
10:00 - 11:00 AM	Exercise Guidelines for the Cancer Survivor: <i>G. Stephen Morris, PT, PhD, FACSM</i>		Oncology Basics – The Role of PT/OT in Palliative Care: <i>Donna Kelly, OTR/L, Med, CLT and Jacqueline Mendelsohn, DPT, CLT</i>	The Role of Contemporary Treatments in Lymphedema Management: <i>Jeannette Zucker, PT, DPT, CLT-LANA, CSCS, WCC, CKTP</i>	The Malignant Spine: <i>Lisa Ruppert, MD</i>	Lower Extremity Examination: <i>Jonas Sokolof, DO</i>
11:00 AM - 12:00 PM		Oncology Basics – Creative Adaptations to Promote Activity for Patients with Cancer: <i>Kelly Guich, MS, OTR/L, CEIM</i>	Oncology Basics – Treatment of Medically Complex Patients with Lymphedema: <i>Jean Kotkiewicz, PT, DPT, CLT</i>	Oncology Basics – Managing Neuropathy to Promote Physical Activity: <i>Gabrielle Miskovitz, OTR/L, CHT and Tiffany Kendig, PT, DPT, MPH</i>	The Malignant Extremity: <i>Jonas Sokolof, DO</i>	Upper Extremity Examination: <i>Christian Custodio, MD</i>
12:00 - 1:00 PM	LUNCH					
1:00 - 2:30 PM	Plenary – Developing a Comprehensive Cancer Rehabilitation Program – Shifting Paradigms in Cancer Rehabilitation – Developing a Comprehensive Cancer Rehabilitation Program (<i>Michael Stubblefield, MD</i>), Overview of Opportunities to Establish Inpatient and Outpatient PT/OT Programming (<i>Sharlynn Tuohy, PT, MBA and Noel Espiritu, PT, DPT</i>), and Cost Effectiveness in Cancer Rehabilitation (<i>Andrea Cheville, MD</i>)					
2:30 - 2:45 PM	BREAK					
2:45 - 3:45 PM	Oncology Basics – Physical Therapy Evaluation and Treatment of the Cancer Patient – A Case Based Approach: <i>Maria Mathai, PT, DPT, CLT and Kinnari Patel, PT, DPT, CLT</i>		Establishing an Outpatient Lymphedema Therapy Program: <i>Melody Ou, PT, MSPT, CLT-LANA, WCC and Ting-Ting Kuo, PT, DPT, MS, WCS, CLT</i>	Specialized PT/OT Programs in the Acute Care Setting: <i>Claudine Campbell, MOT, OTR/L, CLT and Noel Espiritu, PT, DPT</i>	Imaging of the Malignant Spine: <i>Eric Lis, MD</i>	Evaluation of Myelopathy in Cancer: <i>Lisa Ruppert, MD</i>
4:00 - 5:00 PM		Oncology Basics – Occupational Therapy Evaluation and Treatment of the Cancer Patient – A Case Based Approach: <i>Nicole Kasven-Gonzalez, MS, OTR/L and Stacey Mislavsky, MS, OTR/L, CEIM</i>	Early Mobility Program in the Intensive Care Unit: <i>Amanda Weeks, MOT, OTR/L and Paul Yi, BS, PT, DPT</i>	Oncology Basics – Outpatient Treatment Interventions and Considerations for Patients with Breast Cancer: <i>Laura Sheridan, PT, DPT, CLT</i>	Electrodiagnosis in Cancer: <i>Christian Custodio, MD</i>	Imaging of the Plexus in Cancer: <i>Eric Lis, MD</i>

COURSE DESCRIPTION

There are currently more than 14 million cancer survivors in the United States growing to more than 18 million by the year 2020. Cancer survivors often face function-limiting complications stemming from cancer or its treatments including surgery, chemotherapy, and radiotherapy. This symposium will discuss selected cancer treatments that impact rehabilitation and provide practical assessment and treatment strategies/skills that can be applied to clinical practice. This symposium aims to provide healthcare professionals with new or enhanced knowledge that can be implemented in the evaluation and management of cancer and treatment-related impairments, ultimately ensuring the safe and effective restoration of cancer survivor's function and quality of life. Emphasis will be placed on evidence based practice, understanding rationales for therapeutic interventions, as well as identifying areas where future research is needed in the field of cancer rehabilitation.

As part of our ongoing commitment to achieve improved availability of optimal and safe rehabilitation interventions for all cancer survivors, the Rehabilitation Medicine Service of Memorial Sloan-Kettering Cancer Center invites physicians, physical therapists, occupational therapists, and other clinicians to attend this 2-day symposium covering a wide variety of topics in the field of cancer rehabilitation. The symposium format is designed to provide morning and afternoon plenary talks intended for all attendees. Each plenary will be followed by discipline specific break-out sessions that attendees will need to select when registering.

OBJECTIVES

- Define the ever expanding role of comprehensive rehabilitation services in the care of cancer survivors.
- Identify recent advances in the diagnosis, selected treatments, and rehabilitation of cancer survivors.
- Communicate new research and clinical treatment approaches to clinicians working with or who would like to work with cancer survivors.
- Recognize barriers to safe, compassionate, and effective rehabilitation of cancer survivors at all stages of the cancer experience from initial diagnosis to palliative care.

LOCATION



Memorial Sloan-Kettering Cancer Center
Rockefeller Research Laboratories Auditorium
430 East 67th Street (Between First and York Avenues)
New York, New York 10065

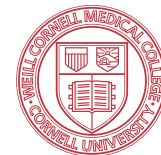
www.mskcc.org/rehabilitation-symposium

For more information, please contact us at:
torresa2@mskcc.org • 646-888-3368



Memorial Sloan-Kettering
Cancer Center

Oncology Section  *Celebrate Living*
American Physical Therapy Association



Pending OT CEU approval

1st Annual Cancer Rehabilitation Symposium

Friday, May 31st, 2013 and Saturday, June 1st, 2013

Memorial Sloan-Kettering Cancer Center
Rockefeller Research Laboratories
Auditorium
430 East 67th Street
(Between First and York Avenues)
New York, NY 10065



Memorial Sloan-Kettering
Cancer Center

Course Description

There are currently more than 14 million cancer survivors in the United States growing to more than 18 million by the year 2020. Cancer survivors often face function-limiting complications stemming from cancer or its treatments including surgery, chemotherapy, and radiotherapy. This symposium will discuss selected cancer treatments that impact rehabilitation and provide practical assessment and treatment strategies/skills that can be applied to clinical practice. This symposium aims to provide healthcare professionals with new or enhanced knowledge that can be implemented in the evaluation and management of cancer and treatment-related impairments ultimately ensuring the safe and effective restoration of cancer survivor's function and quality of life. Emphasis will be placed on evidence based practice, understanding rationales for therapeutic interventions, as well as identifying areas where future research is needed in the field of cancer rehabilitation.

As part of our ongoing commitment to achieve improved availability of optimal and safe rehabilitation interventions for all cancer survivors, the Rehabilitation Medicine Service of Memorial Sloan-Kettering Cancer Center invites physicians, physical therapists, occupational therapists, and other clinicians to attend this 2-day symposium covering a wide variety of topics in the field of cancer rehabilitation. The symposium format is designed to provide morning and afternoon plenary talks intended for all attendees. Each plenary will be followed by discipline specific break-out sessions that attendees will need to select when registering.

Rehab Symposium Objectives

- Define the ever expanding role of comprehensive rehabilitation services in the care of cancer survivors.
- Identify recent advances in the diagnosis, selected treatments, and rehabilitation of cancer survivors.
- Communicate new research and clinical treatment approaches to clinicians working with or who would like to work with cancer survivors.
- Recognize barriers to safe, compassionate, and effective rehabilitation of cancer survivors at all stages of the cancer experience from initial diagnosis to palliative care.

Course Schedule

	Physical Therapy (PT)	Occupational Therapy (OT)	Combined PT/OT	Combined PT/OT	Physician	Workshop
DAY 1						
7:30AM-8:00AM	REGISTRATION					
8:00AM-8:15AM	OPENING REMARKS					
8:15AM-9:45AM	Plenary - Cancer Survivorship: Radiation Fibrosis Kevin Oeffinger, MD (The Spectrum of Late Effects of Radiation Fibrosis), Josh Yamada, MD (Principles and Practice of Radiation Therapy), and Michael Stubblefield, MD (The Radiation Fibrosis Syndrome)					
9:45AM-10:00AM	BREAK					
10:00AM-11:00AM	Vivian Hoffman, PT, MSPT, BS and Fallon Levine, PT, DPT, CLT: Evaluation and Treatment Strategies for Radiation Fibrosis in Patients With Head and Neck Cancer	Claudine Campbell, MOT, OTR/L, CLT: Assessment and Treatment of High Level vs. Low Level Cognitive Deficits	Laryssa Buoneto, PT, DPT, CLT: Oncology Basics - Introduction to Oncology		Michael Stubblefield, MD: Neuromusculo skeletal Complications of the Radiation Fibrosis Syndrome	
11:00AM-12:00PM	Sebi Varghese, PT, DPT: Evaluation and Treatment Strategies for Survivors of Hodgkin Lymphoma	Gabrielle Miskovitz, OTR/L, CHT: Adaptive Strategies and Interventions for Radiation Fibrosis Syndrome	Marissa Wzorek, PT, DPT, CLT: Oncology Basics - Red Flags and Special Considerations		Christian Custodio, MD: Comprehensive Evaluation of Peripheral Nervous System Dysfunction in the Cancer Setting	
12:00PM-1:00PM	LUNCH					
1:00PM-2:30PM	Plenary - Breast Reconstruction Surgery Alexandra Heerdt, MD, MPH, FACS (Principles of Mastectomy and Lymph Node Dissection), Babak Mehrara, MD (Principles of Breast Reconstruction), and Katarzyna Ibanez, MD/Janita Robinson, PT, BS (Post-Mastectomy Reconstruction Syndrome)					
2:30PM-2:45PM	BREAK					
2:45PM-3:45PM	Jennifer Aquino, PT, DPT, GCS and Noel Espiritu, PT, DPT: Therapy Considerations for Geriatric Patients		Kristin Czekalski, MS, OTR/L and Amanda Molnar, PT, MSPT: Oncology Basics - Rehab Considerations for Orthopedic Surgery Patients	Maryann Herklotz, PT, MPT: Oncology Basics - Acute Post Surgical Education and Interventions for Patients with Breast Cancer	Katarzyna Ibanez, MD and Janita Robinson, PT, BS: Comprehensive Evaluation and Treatment of Post-Mastectomy-Reconstruction Syndrome	Jonas Sokolof, DO: Ultrasound Guided Injections in the Cancer Setting
4:00PM-5:00PM		Laura Stimler OTR/L, BCP, C/NDT : Strategies for Addressing Psychosocial Needs in the Rehabilitation Setting	Christine Connelly, MS, OTR/L and Lauren Geib, PT, DPT: Oncology Basics - Rehab Considerations for Neurology and Neurosurgery Patients	Laura Sheridan, PT, DPT, CLT: Oncology Basics - Outpatient Treatment Interventions and Considerations for Patients with Breast Cancer	Andrea Pusic, MD, MHS, FRCSC and Babak Mehrara, MD: Principles of Breast Reconstructive Surgery in the Cancer Setting	Michael Stubblefield, MD: Botulinum Toxin Injections in the Cancer Setting

DAY 2

7:30AM-8:00AM	REGISTRATION					
8:00AM-8:15AM	OPENING REMARKS					
8:15AM-9:45AM	Plenary - The Role of Exercise in Cancer Rehabilitation Jonas Sokolof, DO (The Role of Exercise in Cancer Rehabilitation), Annelise Savodnik, PT, MPT, CLT (The Role of Exercise in Managing Cancer-Related Fatigue), and Lee Jones, PhD (The Role of Exercise as a Prevention and Treatment Strategy for Cancer)					
9:45AM-10:00AM	BREAK					
10:00AM-11:00AM	G. Stephen Morris, PT, PhD, FACSM: Exercise Guidelines for the Cancer Survivor		Donna Kelly, OTR/L, Med, CLT and Jacqueline Mendelsohn, DPT, CLT: Oncology Basics - The Role of PT/OT in Palliative Care	Jeannette Zucker, PT, DPT, CLT-LANA, CSCS, WCC, CKTP: The Role of Contemporary Treatments in Lymphedema Management	Lisa Ruppert, MD: The Malignant Spine	Jonas Sokolof, DO: Lower Extremity Examination
11:00AM-12:00PM		Kelly Guich, MS, OTR/L, CEIM: Oncology Basics - Creative Adaptations To Promote Activity for Patients with Cancer	Jean Kotkiewicz, PT, DPT, CLT: Multi-Dimensional use of Lymphedema Techniques for the Medically Complex Patient	Gabrielle Miskovitz, OTR/L, CHT and Tiffany Kendig, PT, DPT, MPH: Oncology Basics - Managing Neuropathy To Promote Physical Activity	Jonas Sokolof, DO: The Malignant Extremity	Christian. Custodio, MD: Upper Extremity Examination
12:00PM-1:00PM	LUNCH					
1:00PM-2:30PM	Plenary - Developing a Comprehensive Cancer Rehabilitation Program Michael Stubblefield, MD (Shifting Paradigms in Cancer Rehabilitation – Developing a Comprehensive Cancer Rehabilitation Program), Sharlynn Tuohy, PT, MBA and Noel Espiritu, PT, DPT (Overview of Opportunities to Establish Inpatient and Outpatient PT/OT Programming), and Andrea Cheville, MD (Cost Effectiveness in Cancer Rehabilitation)					
2:30PM-2:45PM	BREAK					
2:45PM-3:45PM	Anthony Yorio, PT, DPT and Kinnari Patel, PT, DPT, CLT: Oncology Basics - Physical Therapy Evaluation and Treatment of the Cancer Patient - A Case Based Approach		Melody Ou, PT, MSPT, CLT-LANA, WCC and Ting-Ting Kuo, PT, DPT, MS, WCS, CLT: Establishing an Outpatient Lymphedema Therapy Program	Claudine Campbell, MOT, OTR/L, CLT and Noel Espiritu, PT, DPT: Specialized PT/OT Programs in the Acute Care Setting	Eric Lis, MD: Imaging of the Malignant Spine	Lisa Ruppert, MD: Evaluation of Myelopathy in Cancer
4:00PM-5:00PM		Nicole Kasven-Gonzalez, MS, OTR/L and Stacey Mislavsky, MS, OTR/L, CEIM: Oncology Basics - Occupational Therapy Evaluation and Treatment of the Cancer Patient - A Case Based Approach	Amanda Weeks, MOT, OTR/L and Paul Yi, PT, DPT: Early Mobility Program in the Intensive Care Unit	Laura Stimler OTR/L, BCP, C/NDT and Lauren Ward: Developing a Pediatric Oncology Physical and Occupational Therapy Program	Christian Custodio, MD: Electrodiagnosis in Cancer	Eric Lis, MD: Imaging of the Plexus in Cancer

Course Abstracts

Plenary Lectures:

May 31st

- 8:15AM-9:45AM: Cancer Survivorship: Radiation Fibrosis
 - 8:15AM-8:45AM
Kevin Oeffinger, MD
“The Spectrum of Late Effects of Radiation Fibrosis”
This presentation will discuss the myriad sequelae that can occur as a result of radiation treatment. The epidemiology, risk factors, organ systems affected, time course of late effects, as well as the psychosocial and functional consequences of these effects will be covered.
 - 8:45AM-9:15AM
Josh Yamada, MD
“Principles and Practice of Radiation Therapy”
This presentation will discuss the historical as well as contemporary practice of radiation oncology. Concepts important to clinicians in the field of rehabilitation medicine will be covered with emphasis on topics that affect the function and quality of life of cancer survivors.
 - 9:15AM-9:45AM
Michael Stubblefield, MD
“The Radiation Fibrosis Syndrome”
This presentation will discuss the pathophysiology underlying radiation fibrosis and leading to the radiation fibrosis syndrome (RFS). The risk factors for radiation fibrosis will be discussed thus setting the stage for a more in-depth discussion of identification, evaluation, and treatment of neuromusculoskeletal complication of RFS at a later presentation.

- 1:00PM-2:30PM: Breast Reconstruction Surgery
 - 1:00PM-1:30PM
Alexandra Heerdt, MD, MPH, FACS
“Principles of Mastectomy and Lymph Node Dissection”
This presentation will provide an overview of the principles of mastectomy and lymph node dissection. The decision making process underlying contemporary breast surgery will be explored. Additionally, the salient anatomy and basics of surgical technique will be discussed.
 - 1:30PM-2:00PM
Babak Mehrara, MD
“Principles of Breast Reconstruction”
This presentation will provide an overview of the principles of breast reconstruction. The decision making process underlying contemporary breast reconstruction will be explored. Additionally, the salient anatomy and basics of surgical technique and materials will be discussed as a precursor to a more detailed presentation to occur later in the day.
 - 2:00PM-2:30PM
Katarzyna Ibanez, MD and Janita Robinson, PT, BS
“Post-Mastectomy Reconstruction Syndrome”
This presentation will discuss what is known about the epidemiology, risk factors, and pathophysiology of the newly recognized post-mastectomy-reconstruction syndrome. This overview will set the stage for a more in-depth discussion of the comprehensive evaluation and treatment of this painful and disabling disorder later in the day.

June 1st

- 8:15AM-9:45AM: The Role of Exercise in Cancer Rehabilitation
 - 8:15AM-8:45AM
Jonas Sokolof, DO
“The Role of Exercise in Cancer Rehabilitation”
This presentation will discuss the role of exercise in restoring function and quality of life to cancer survivors. The most recent data on the ability of exercise to improve fitness, decrease fatigue, and

ameliorate a variety of other adverse cancer and cancer treatment related sequelae across the continuum of care will be presented.

- 8:45AM-9:15AM
Annelise R. Savodnik PT, MPT, CLT
“The Role of Exercise in Managing Cancer-Related Fatigue”
This presentation will provide an overview of cancer-related fatigue syndrome and the research supporting the positive impact regular exercise can have on patients currently receiving or having received cancer treatments.
- 9:15AM-9:45AM
Lee Jones, PhD
“The Role of Exercise as a Prevention and Treatment Strategy for Cancer”
This presentation will discuss the emerging knowledge base concerning the use of exercise as a prevention and treatment for cancer. Contemporary data from a variety of diseases will be presented to provide a compelling argument for when, why, and how patients should exercise to help prevent the development of cancer or curtail its recurrence.
- 1:00PM-2:30PM: Developing a Comprehensive Cancer Rehabilitation Program
 - 1:00PM-1:30PM
Michael Stubblefield, MD
“Shifting Paradigms in Cancer Rehabilitation – Developing a Comprehensive Cancer Rehabilitation Program”
This presentation will provide an overview of the rapidly changing field of cancer rehabilitation. Meeting the needs of cancer survivors will require a paradigm shift in how care is delivered at every level from the institution to the therapist. Attendees will learn where strategic changes in their delivery models might be made to help develop an effective comprehensive cancer rehabilitation program.
 - 1:30PM-2:00PM
Sharlynn Tuohy, PT, MBA and Noel Espiritu PT, DPT
“Overview of Opportunities to Establish Inpatient and Outpatient Physical Therapy and Occupational Therapy Programming”
This presentation will discuss the need for cancer rehabilitation programs in the community. We will identify opportunities to initiate programming to address the unique needs of this population. The multi-modal approach to caring for these patients will be presented.
 - 2:00PM-2:30PM
Andrea Cheville, MD
“Cost Effectiveness in Cancer Rehabilitation”
This program will review what is currently known about cost effectiveness in cancer rehabilitation and if it hinders or supports clinical effectiveness. A discussion of the critical need for additional research in this field will provide an opportunity to explore what key studies are needed and what they might look like.

Physical Therapist (PT) Breakout Sessions:

May 31st

- 10:00AM-11:00AM
Vivian Hoffman, PT, MPT, BS and Fallon Levine, PT, DPT, CLT
“Evaluation and Treatment Strategies for Radiation Fibrosis in Patients with Head and Neck Cancer”
This presentation will focus on evaluation and treatment of patients with head and neck cancer presenting with radiation fibrosis. An overview of manual and neuromuscular re-education techniques used to optimize postural alignment and decrease pain during functional activities will be discussed.
- 11:00AM-12:00PM
Sebi Varghese, PT, DPT
“Evaluation and Treatment Strategies for Survivors of Hodgkin Lymphoma”
This presentation will provide an overview on how physical therapists can effectively evaluate and treat survivors of Hodgkin’s Lymphoma. A discussion from a traditional and holistic manual therapy approach focusing on optimization of spine and joint alignment while incorporating neuromuscular re-

education techniques including the importance of assessing and treating cervical proprioception will be addressed.

- 2:45PM-3:45PM
Jennifer Aquino PT, DPT, GCS and Noel Espiritu, PT, DPT
“Therapy Considerations for the Geriatric Patients”
This presentation will cover the rehabilitation implications of cancer and its treatment specific to the older adult. The comprehensive assessment of unique deficits, side effects and the multidisciplinary approach to treatment throughout the cancer spectrum will be discussed.

June 1st

- 10:00AM-11:00AM
G. Stephen Morris, PT, PhD, FACSM
“Exercise Guidelines for the Cancer Survivor”
This presentation’s focus is to introduce clinician’s to exercise prescription for the cancer survivor to help guide them in the safe and effective use of exercise training in this population. This will be accomplished through discussion of exercise physiology basics, principles of exercise testing and prescription, and review of currently available guidelines focused on exercise testing and training of cancer survivors.
- 2:45PM-3:45PM
Anthony Yorio, PT, DPT and Kinnari Patel, PT, DPT, CLT
“Oncology Basics: Physical Therapy Evaluation and Treatment of the Cancer Patient - A Case Based Approach”
This session will present several patient case scenarios that describe the role of PT in the rehabilitation of the patient with cancer. Emphasis will be placed on how to provide a comprehensive assessment, establish individualized treatment and discharge plan. Through these case scenarios, clinical decision making pathways will be explored.

Occupational Therapist (OT) Breakout Sessions:

May 31st

- 10:00AM-11:00AM
Claudine Campbell, MOT, OTR/L, CLT
“Assessment and Treatment of High Level vs. Low Level Cognitive Deficits”
This presentation will discuss various methods for assessing and providing therapeutic interventions for clients with impaired cognition as a result of their cancer diagnosis and treatment. Various approaches to improving occupational performance for clients with high level vs. low level cognitive impairment will be reviewed, with a focus on utilizing a combination of compensatory and remediation strategies.
- 11:00AM-12:00PM
Gabrielle Miskovitz, OTR/L, CHT
“Adaptive Strategies and Interventions for Radiation Fibrosis Syndrome”
This presentation will discuss treatment interventions, compensatory techniques, and environmental modifications that can be implemented by OT/PTs to facilitate the care and treatment of patients presenting with radiation fibrosis syndrome. Focus will be on how to address functional deficits related to progressive changes that effect basic and instrumental activities of daily living, work, and leisure tasks.
- 4:00PM-5:00PM
Laura Stimler OTR/L, BCP, C/NDT
“Strategies for Addressing Psychosocial Needs in the Rehabilitation Setting”
This presentation will cover the psychosocial issues many patients with cancer experience when dealing with their cancer diagnosis and subsequent treatment. A holistic perspective will be highlighted, illustrating the importance of multi-disciplinary communication, support and alternative coping strategies.

June 1st

- 11:00AM-12:00PM

Kelly Guich, MS, OTR/L, CEIM

“Oncology Basics: Creative Adaptations to Promote Activity for Patients with Cancer”

This presentation will provide examples of creative adaptations that can be utilized for patients with cancer to promote increased activity participation. The purpose and composition of several unique adaptations designed by occupational therapy will be described in detail, including specialized custom-made orthotics, clothing modifications, and equipment modifications (commode, wheelchair) for patients with cancer in a variety of treatment settings.

- 4:00PM-5:00PM

Nicole Kasven-Gonzalez, MS, OTR/L and Stacey Mislavsky MS, OTR/L, CEIM

“Oncology Basics: Occupational Therapy Evaluation and Treatment of the Cancer Patient – A Case Based Approach”

This presentation will utilize a series of case studies to illustrate the unique role of occupational therapy in an oncology setting. A variety of patient cases will be presented, to demonstrate the utilization of comprehensive and holistic evaluation as well as low level and high level treatment strategies to promote occupational performance, and address each patient’s unique cancer experience.

Combined PT and OT Breakout Sessions:

May 31st

- 10:00AM-11:00AM

Laryssa Buoneto, PT, DPT, CLT

“Oncology Basics: Introduction to Oncology”

This presentation will provide an overview of cancer biology, terminology, causes, risk factors and diagnostic/staging techniques. Discussion on the principles of cancer treatments including surgery, chemotherapy, and radiation therapy will provide the audience with an informational foundation upon which to build their knowledge.

- 11:00AM-12:00PM

Marissa Wzorek, PT, DPT, CLT

“Oncology Basics: Red Flags and Special Considerations”

This presentation will discuss the oncology patient from a therapeutic point of view focusing on relative and contraindications as well as special considerations related to treatment interventions throughout the continuum of care. Potential factors affecting manual therapy, therapeutic exercise, and the incorporation of modalities will be addressed.

- 2:45PM-3:45PM

Kristin Czekalski, MS, OTR/L and Amanda Molnar, PT, MSPT

“Oncology Basics: Rehab Considerations for Orthopedic Surgery Patients”

This presentation will provide information about the treatment of primary and metastatic bone disease including radiation, chemotherapy and surgery. An overview of the unique rehabilitation considerations for evaluation, treatment, adaptation, discharge planning and other challenges encountered by physical and occupational therapists when working with patients after orthopedic surgery will be provided.

- 2:45PM-3:45PM

Maryann Herklotz, PT, MPT

“Oncology Basics: Acute Post Surgical Education and Interventions for Patients with Breast Cancer”

This presentation will discuss the physical therapist’s role with acute, post-surgical breast cancer patients. An overview of the education and exercise training patients receive following breast surgery will be provided. Differences between the education and activity precautions for patients with and without reconstruction will be highlighted.

- 4:00PM-5:00PM

Christine Connelly, MS, OTR/L and Lauren Geib, PT, DPT

“Oncology Basics: Rehab Considerations for Neurology and Neurosurgery Patients”

This session will cover CNS-related symptoms, diagnoses, medical treatments, and rehabilitation interventions for the oncology population. Specific rehabilitation implications for assessments, interventions and precautions for acute care neurosurgical patients will be explained.

- 4:00PM-5:00PM
Laura Sheridan, PT, DPT, CLT
“Oncology Basics: Outpatient Treatment Interventions and Considerations for Patients with Breast Cancer”
This presentation will address impairments and functional limitations commonly present in individuals diagnosed and treated for breast cancer. Cording, radiation fibrosis, and lymphedema are a few topics that will be considered focusing on a multi-modal approach to treatment.

June 1st

- 10:00AM-11:00AM
Donna Kelly, OTR/L, Med, CLT and Jacqueline Mendelsohn, DPT, CLT
“Oncology Basics: The Role of Occupational Therapy and Physical Therapy in Palliative Care”
This presentation will discuss the unique role of occupational and physical therapy in palliative care. Some of the challenges in developing individualized care plans and maintaining appropriate goals in relation to the interdisciplinary plan of care will be discussed. Occupational and physical therapy treatment plan options and approaches for providing meaningful and holistic rehabilitation in the palliative care phase of treatment will also be provided.
- 10:00AM-11:00AM
Jeannette Zucker, PT, DPT, CLT-LANA, CSCS, WCC, CKTP
“The Role of Contemporary Treatments in Lymphedema Management”
This presentation will discuss treatment interventions that supplement traditional decongestive lymphedema therapy including the integration of specific manual techniques as well as applications of Kinesiotape and Cold/Low Level Laser.
- 11:00AM-12:00PM
Jean Kotkiewicz, PT, DPT, CLT
“Multi-Dimensional use of Lymphedema Techniques for the Medically Complex Patient”
This presentation will discuss how lymphedema concepts and techniques have been utilized, modified, and applied to assist with goals of care for patients with various diagnoses including but not limited to: renal dysfunction, amyloidosis, capillary leak syndrome, and inferior vena cava resections. The goals and guidelines for each of these approaches will be discussed, along with educational resources provided to patients at risk for lymphedema.
- 11:00AM-12:00PM
Gabrielle Miskovitz, OTR/L, CHT and Tiffany Kendig, PT, DPT, MPH
“Oncology Basics: Managing Neuropathy to Promote Physical Activity”
This presentation will provide an overview on a variety of treatment interventions to manage and maximize function for patients presenting with Chemotherapy Induced Peripheral Neuropathy (CIPN) symptoms. A discussion on how CIPN impacts the ability to perform daily activities, work, and leisure tasks within the home and in the community will be addressed.
- 2:45PM-3:45PM
Melody Ou, PT, MSPT, CLT-LANA, WCC and Ting-Ting Kuo, PT, DPT, MS, WCS, CLT
“Establishing an Outpatient Lymphedema Therapy Program”
This presentation aims to provide practical knowledge on how to establish an Outpatient Lymphedema Therapy Program including considerations of visit time and frequency, space and environmental considerations, ordering of compression garments, and common billing related questions. Learn what factors should be considered when implementing and/or expanding a lymphedema practice based on accepted standards of care.
- 2:45PM-3:45PM
Claudine Campbell, MOT, OTR/L, CLT and Noel Espiritu, PT, DPT
“Specialized Physical Therapy and Occupational Therapy Programs in the Acute Care Setting”
This presentation will discuss unique PT and OT programs that can be established in the acute oncology setting. PT/OT programs that have been established at MSKCC will be described, including the inpatient BMT program, postoperative training, comprehensive cognitive assessment and cognitive group protocol, and lymphedema management in the acute care setting.
- 4:00PM-5:00PM

Amanda Weeks, MOT, OTR/L and Paul Yi
“Early Mobility Program in the Intensive Care Unit”

This presentation will describe the development of an early mobility program in an oncology intensive care unit (ICU). The development of a program protocol for patients with cancer, multidisciplinary education on the importance and feasibility of early occupational and physical therapy for mechanically ventilated patients in a cancer setting, and the challenges faced in creating and maintaining a successful program will be highlighted.

- 4:00PM-5:00PM

Laura Stimler, OTR/L, BCP, C/NDT and Lauren Ward

“Developing a Pediatric Oncology Physical and Occupational Therapy Program”

This presentation will describe various types of pediatric cancer, disease specific treatment, long term side effects and the impact on the family system. Specific programs have been developed at MSKCC to identify and meet the unique needs of each pediatric population throughout the continuum of care. Various protocols will be described that have proven to be effective in generating appropriate pediatric rehabilitation referrals in the inpatient and outpatient settings.

Physician Breakout Sessions:

May 31st

- 10:00AM-11:00AM

Michael Stubblefield, MD

“Neuromusculoskeletal Complications of the Radiation Fibrosis Syndrome”

This presentation will discuss the identification, evaluation, and treatment of neuromusculoskeletal complications of the radiation fibrosis syndrome. Using long-term survivors of Hodgkin lymphoma as a paradigm it will detail the components what is termed “myelo-radiculo-plexo-neuro-myopathy” so that attendees will have a better idea how to approach radiation complications in any cancer patient.

- 11:00AM-12:00PM

Christian Custodio, MD

“Comprehensive Evaluation of Peripheral Nervous System Dysfunction in the Cancer Setting”

This presentation will discuss the comprehensive evaluation of peripheral nervous system dysfunction in the cancer setting. Clinical evaluation of the nerve root, plexus, peripheral nerve, neuromuscular junction, and muscle will be covered. A wide range of diagnoses common to the cancer setting including those that are cancer related, degenerative, and some not always obvious will be detailed.

- 2:45PM-3:45PM

Katarzyna Ibanez, MD and Janita Robinson, PT, BS

“Comprehensive Evaluation and Treatment of Post-Mastectomy Reconstruction Syndrome”

This presentation will detail the comprehensive evaluation and treatment of post-mastectomy-reconstruction syndrome. The principles of clinical and electrophysiological diagnosis will be covered as will the use of medications and injections including botulinum toxin. The critical role of advanced physical therapeutic techniques including advanced myofascial, lymphedema, visceral, neuro, orthopedic, craniosacral, and other modalities to produce an optimal result will be discussed.

- 4:00PM-5:00PM

Andrea Pusic, MD, MHS, FRCSC and Babak Mehrara, MD

“Applied Breast Reconstruction Surgery in the Cancer Setting”

This presentation will provide in in-depth discussion of the decision making process underling contemporary breast reconstruction surgery. The various options available will be detailed including the types of implants and flaps currently in clinical use. The surgical techniques required to achieve optimal results with options will be illustrated.

June 1st

- 10:00AM-11:00AM

Lisa Ruppert, MD

“The Malignant Spine”

The presentation will discuss the identification, evaluation, and treatment of patients with spine and spinal cord tumors. Attendees will learn the red flags for determining if axial back pain is likely related

to tumor and requires further investigation. Causes of myelopathy will be discussed as will the management of pain and neurologic dysfunction related to tumors of the spine and nerve roots.

- 11:00AM-12:00PM
Jonas Sokolof, DO
“The Malignant Extremity”
This presentation will discuss the identification, evaluation, and treatment of patients with extremity pain or dysfunction in the cancer setting. Attendees will learn the red flags for determining if appendicular pain is likely related to tumor and requires further investigation. Contemporary evaluation, including selection of appropriate imaging will be covered in detail as will safe and effective treatment.
- 2:45PM-3:45PM
Eric Lis, MD
“Imaging of the Malignant Spine”
This workshop will provide an eyes-on overview of imaging of the malignant spine. Attendees will learn the basics of interpreting various types of imaging including X-rays, MRI’s, CT’s, etc. This will be followed by an in-depth discussion of the radiographic assessment of spine tumors. Attendees will then be able to test their skills on unknown images under the direction of the workshop director. (20 participants), Physician
- 4:00PM-5:00PM
Christian Custodio, MD
“Electrodiagnosis in Cancer”
This presentation will discuss the role of electrodiagnosis in the cancer setting. The issues that often present a unique challenge in the cancer setting will be covered as will the strategies to overcome them. Attendees will learn how to differentiate often complex and overlapping neuromuscular disorders on electrophysiological assessment

Workshops:

May 31st

- 2:45PM-3:45PM
Jonas Sokolof, DO
“Ultrasound Guided Injections in the Cancer Setting”
This workshop will demonstrate the principles and practice of ultrasound guided injections in the cancer setting. Participants will have hands on experience using ultrasound to diagnose and treat various common musculoskeletal conditions such as bursitis, osteoarthritis, tendonitis, carpal tunnel syndrome, etc. In addition, participants will learn how to use ultrasound to guide the safe and effective treatment of injections in cancer specific disorders such as post-mastectomy-reconstruction syndrome, post-thoracotomy pain from tumor, etc.
- 4:00PM-5:00PM
Michael Stubblefield, MD
“Botulinum Toxin Injections in the Cancer Setting”
This workshop will demonstrate the use of botulinum toxin injections in the cancer setting. The pathophysiology and potential risks and benefits of using botulinum toxin in various cancer-specific scenarios will be discussed. Attendees will learn the decision making process behind safe and effective use of botulinum toxin as well as the various techniques for palpation-guided and EMG-guided injection.

June 1st

- 10:00AM-11:00AM
Jonas Sokolof, DO
“Lower Extremity Examination”
This workshop will demonstrate the evaluation of common and uncommon lower extremity pain and functional disorders likely to be encountered in cancer patients. Participants will gain hands-on experience in diagnosing various neuromusculoskeletal disorders including radiculopathy, plexopathy, mononeuropathies, joint and ligament disorders, etc. There will be extensive discussion concerning differentiating benign from malignant disease.

- 11:00AM-12:00PM
Christian Custodio, MD
“Upper Extremity Examination”
This workshop will demonstrate the evaluation of common and uncommon upper extremity pain and functional disorders likely to be encountered in cancer patients. Participants will gain hands-on experience in diagnosing various neuromusculoskeletal disorders including radiculopathy, plexopathy, mononeuropathies, joint and ligament disorders, etc. There will be extensive discussion concerning differentiating benign from malignant disease.
- 2:45PM-3:45PM
Lisa Ruppert, MD
“Evaluation of the Myelopathy in Cancer”
This workshop will discuss evaluation of cancer patients with myelopathy in the cancer setting. Extensive attention will be given to the specifics of a compressive ASIA examination. Assessment of the autonomic nervous system, including bowel, bladder, and sexual function will also be covered.
- 4:00PM-5:00PM
Eric Lis, MD
“Imaging of the Plexus in Cancer”
This workshop will provide an eyes-on overview of imaging of the brachial and lumbar plexus. Attendees will learn the basics of interpreting various types of imaging including MRI's, CT's, and PET-CT's. This will be followed by an in-depth discussion of the radiographic assessment of plexus tumors. Attendees will then be able to test their skills on unknown images under the direction of the workshop director.

Course Information

\$495.00 – Early Registration (deadline: 03/31/13)

\$550.00 – After 03/31/13

Refunds will be given to participants cancelling prior to May 1st. Refunds for cancellation will be subject to a \$50.00 administrative fee. Cancellations after May 1st will not be refunded. Memorial Sloan-Kettering Cancer Center reserves the right to cancel this conference and participants will receive a 100% refund in the event that this occurs.