

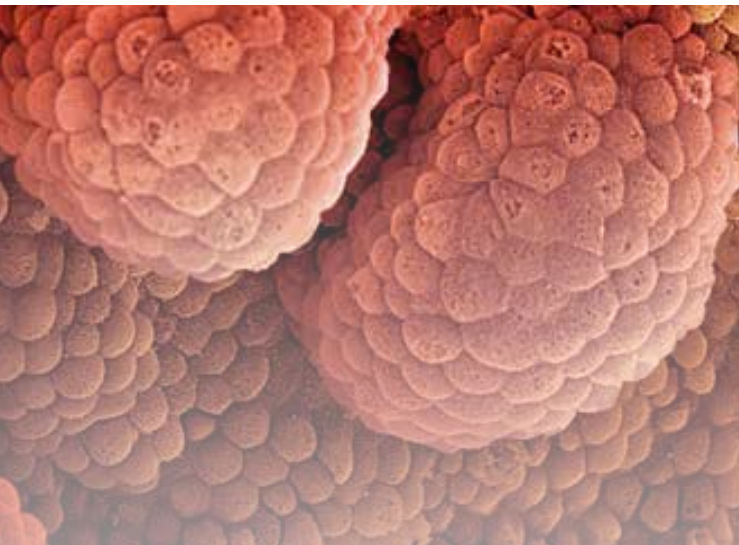


Memorial Sloan Kettering
Cancer Center



are pleased to announce

October 16-17, 2015



Molecular Oncology for the Clinical Oncologist:

DEFINING THE ACTIONABLE GENOME

COURSE LOCATION

Memorial Sloan Kettering Cancer Center
ZUCKERMAN RESEARCH CENTER
417 East 68th Street between First and York Avenues

New York

PLANNING COMMITTEE CHAIRS

Richard R. Barakat
MD MBA FACS

DEPUTY PHYSICIAN-IN-CHIEF
Regional Care Network and MSK Cancer Alliance



Andrew L. Salner MD

CHIEF, DEPT. OF RADIATION ONCOLOGY
Helen & Harry Gray Cancer Center
Hartford Hospital
Hartford Radiation Oncology Associates, PC



COURSE DIRECTOR

David Solit MD

GEOFFREY BEENE CHAIR
Director, Marie-Josée and Henry R. Kravis
Center for Molecular Oncolog



Please register today at:

www.mskcc.org/genomecourse

October 16-17, 2015

MOLECULAR ONCOLOGY FOR
THE CLINICAL ONCOLOGIST:

DEFINING THE ACTIONABLE GENOME

TARGET AUDIENCE

Physicians and allied health professionals.

COURSE OVERVIEW

Recent advances in molecular profiling have identified new cancer drug targets and prognostic markers. This course will review current efforts to apply state-of-the-art genetic profiling to guide patient care. Topics will include a discussion of the optimal use of genetic testing in the clinical management of cancer patients and recent advances in the development of molecular signatures that predict for sensitivity to targeted kinase inhibitors and immunotherapies.

Please register today at:

www.mskcc.org/genomecourse

REGISTRATION

www.mskcc.org/mskcanceralliance

CONTACT:

OFFICE OF CONTINUING
MEDICAL EDUCATION

Memorial Sloan Kettering Cancer Center
633 Third Avenue, 12th floor, New York, NY 10017

(646) 227-2025
brodheap@mskcc.org

For course updates, follow:

@mskcme on Twitter or:
facebook.com/mskcme

ACCREDITATION STATEMENT

MSK is accredited by the Accreditation Council for Continuing Medical Education to sponsor continuing medical education for physicians.



Memorial Sloan Kettering
Cancer Alliance

Memorial Sloan Kettering Cancer Center | 633 Third Avenue, 12th Floor, New York, NY 10017 | mskcc.org