

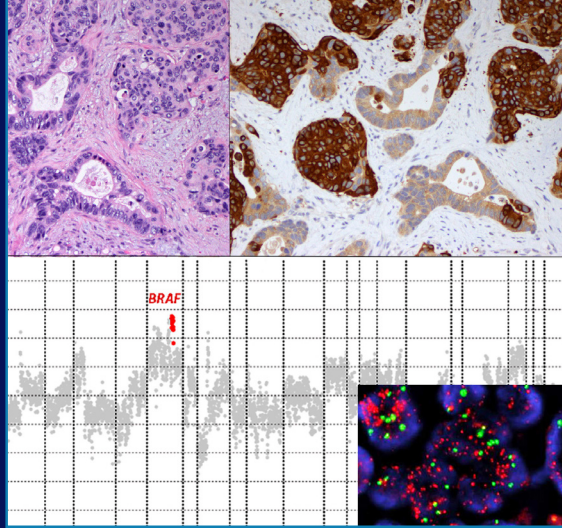


Memorial Sloan Kettering
Cancer Center

Gastrointestinal Pathology Fellowship

The Department of Pathology and Laboratory Medicine at Memorial Sloan Kettering Cancer Center offers a one-year fellowship in gastrointestinal and hepatobiliary pathology. The fellowship begins on July 1st and ends on June 30th of the following year. Fellows are integrated into a specialized, active service that evaluates greater than 10,000 cases each year comprising biopsies and resections from the gastrointestinal tubular tract, liver, biliary tract and pancreas. Our service emphasizes a multidisciplinary team approach to patient management and provides exposure to a wealth of interesting and challenging in-house specimens, consultation case material, and comprehensive slide study sets.

During the fellowship year, fellows will also have the opportunity to conduct clinicopathologic and/or translational research. Faculty members will coach fellows in selecting a limited number of primary research projects, and guide them through the process of preparing research proposals, compiling and analyzing the data, preparing abstracts for submission to, and presentation at, national meetings, and preparing manuscripts for submission to scientific journals. Collaboration with members of other departments will be sought as necessary.



Number of Positions: 2

Length of Program: 1 year
(start date July 1st)

How to Apply: Online only
(apply at least 18 months prior to start date)
<https://mskcc.embark.com/login/apply?target=pathology>

Contact:

Angelica Angel, Sabrina Calabria ,
and Sheila Vazquez,
Department of Pathology
and Laboratory Medicine
Memorial Sloan Kettering
Cancer Center

212-639-7102
pthfellows@mskcc.org

For more information visit:

<https://www.mskcc.org/departments/pathology-laboratory-medicine/fellowships>

Or scan the
QR code →



Goals and Objectives

- To increase experience with the diagnosis of both neoplastic and non-neoplastic diseases of the gastrointestinal tract, liver, and pancreatobiliary system
- To develop an understanding of the clinical aspects of the various diseases and an appreciation of the role of the pathologist in a multi-disciplinary team approach to the treatment of patients with these diseases
- To develop a robust understanding of special techniques used in the diagnosis of these diseases
- To become proficient at handling complex and challenging cases and at operating in a high volume clinical setting
- To enhance teaching abilities through the interaction with pathology trainees, visiting students, and clinicians
- To become familiar with diverse research techniques and to improve data presentation and manuscript writing skills.

Clinical Responsibilities

Fellows will review slides and prepare reports for selected in-house and submitted consultation cases, with increasing independence as the fellowship progresses. They will be involved in the supervision and teaching of surgical pathology fellows, residents, and medical students in grossing and handling of specimens, writing up cases for sign-out with attending faculty, and preparing presentations for intradepartmental conferences and journal clubs. Fellows will be responsible for reviewing and presenting cases at numerous interdisciplinary conferences such as tumor boards, gastroenterology fellows' conferences, and tumor-staging conferences.

Requirements

Applicants must be board-certified or board-eligible in anatomic pathology by the American Board of Pathology or the Royal College of Physicians and Surgeons of Canada.

Faculty

Amitabh Srivastava, MBBS

Director, GI Pathology Fellowship

Raymond Isidro-Vega, MD, PhD

Associate Program Director

Olca Basturk, MD

Anne Koehne de Gonzalez

Christine

Iacobuzio-Donahue, MD, PhD

Jinru Shia, MD

Carlie Sigel, MD

Laura Tang, MD, PhD

Efsevia Vakiani, MD, PhD